

# Materials Rhythm



Charcoal  
3015



Black  
3014



Twilight  
3007



Berry Blue  
3005

## Materials Medley



Gabriel

Composition:  
Polyester 100%

Application:  
Width: 140cm  
Weight: 510g/linear metre approx  
Price Band 2

### Standards:

Abrasion Resistance: Martindale 75,000 rubs. EN ISO 12947-2

Flammability: EN 1021 1&2. BS 5852 0&1. Calif Tech Bull 117-E. UNI 9175 Class 1 IM

Light Fastness: Scale 1-8, max 8 - EN ISO 105 - B02. 5-7

Fastness to Rubbing: Scale 1-5, max 5- ISO 105×12 (wet/dry) 4-5

Colour Matching: Batch to batch variations in shade may occur within commercial tolerances.



# Materials Medley



1HA18 64019



1HA07 63016



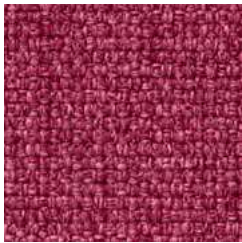
1HA17 63017



1HA30 64123



1HA29 64124



1HA26 64125



1HA28 63063



1HA22 61189



1HA06 63013



1HA25 63064



1HA01 61002



1HA02 61003



1HA08 65011



1HA23 60167



1HA09 60003



1HA04 60999

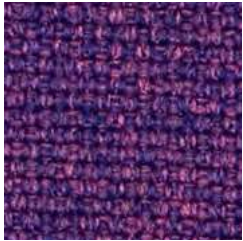


1HA03 60004

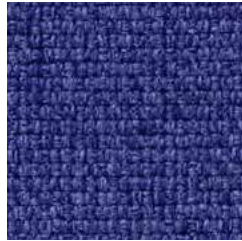


1HA16 61004

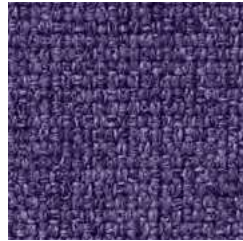
# Materials Medley



1HA19 65012



1HA31 66145



1HA27 65086



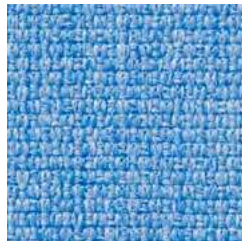
1HA14 66007



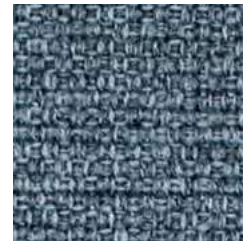
1HA20 66009



1HA33 66144



1HA32 67052



1HA13 66008



1HA15 66010



1HA10 68002



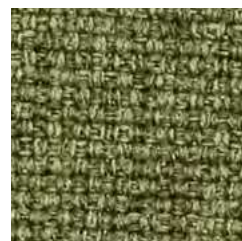
1HA05 62002



1HA24 62054



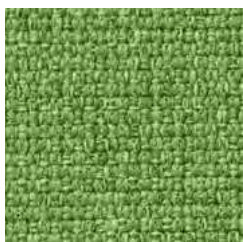
1HA21 67002



1HA11 68005



1HA35 68114



1HA36 68115



1HA37 67054



1HA12 67006



1HA34 67053

## Materials Sync



Herman Miller

Composition:  
Polyester 100%

Application:  
Width: 55"  
Weight: 24.1 ounces/linear yard  
Price Band 3

Standards:  
Flammability: CA TB 117-2013, NFPA 260  
Lightfastness: Grade 4, 40 hours

Colour Matching: Batch to batch variations in shade may occur within commercial tolerances.

Maintenance: Vacuum regularly. Wipe clean with a damp cloth.



# Materials Sync



Black  
3SY12



Dark Carbon  
3SY11



Slate Grey  
3SY10



Nightfall  
3SY08



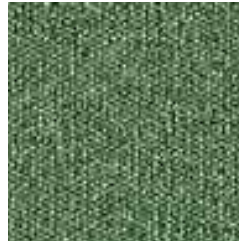
Glacier  
3SY07



Truffle  
3SY04



Citron  
3SY02



Everglade  
3SY06



Dark Mineral  
3SY09



Pine Cone  
3SY01



Wild Berry  
3SY05



Canyon  
3SY03