



# Setu™ Family colour choices

## Setu Family colour choice card

### Lyris

Composition:  
 Copolyester 74%, Polyester 26%  
 Application:  
 Weight: 37g/square foot  
 Standards:  
 Abrasion Resistance: Wyzenbeek, 200,000 double rubs  
 Flammability: CA TB 117, NFPA 260  
 Light Fastness: Grade 4, 40 hours

### ColorGuard

Composition:  
 Vinyl 100% / backing: Polyester 88%, Cotton 12%  
 Application:  
 Width: 137cm  
 Weight: 36 ounces/linear yard  
 Standards:  
 Abrasion Resistance: Wyzenbeek, 200,000 double rubs  
 Flammability: CA TB 117, NFPA 260, ASTM E 84  
 Light Fastness: Grade 4, 40 hours

### Crossing

Composition:  
 Antimony-free Polyester 86%, Recycled Polyester 14%  
 Application:  
 Width: 137cm  
 Weight: 12.9 ounces/linear yard  
 Standards:  
 Abrasion Resistance: Wyzenbeek, 200,000 double rubs  
 Flammability: CA TB 117, NFPA 260, ASTM E 84  
 Light Fastness: Grade 4, 40 hours

### Stitches

Composition:  
 Polyester 54%, recycled Polyester 46%  
 Application:  
 Width: 137cm  
 Weight: 13.5 ounces/linear yard  
 Standards:  
 Abrasion Resistance: Wyzenbeek, 100,000 double rubs  
 Flammability: CA TB 117, NFPA 260,  
 Light Fastness: Grade 4, 40 hours

### Twist


Composition:  
 Antimony-free Polyester 80%, Recycled Polyester 13%,  
 Polyester 7%  
 Application:  
 Width: 137cm  
 Weight: 15 ounces/linear yard  
 Standards:  
 Abrasion Resistance: Wyzenbeek, 200,000 double rubs  
 Flammability: CA TB 117, NFPA 260, ASTM E 84  
 Light Fastness: Grade 4, 40 hours

Colour Matching: Batch to batch variations in shade may occur within commercial tolerances.

Maintenance:  
 Vacuum regularly. Wipe clean with a damp cloth.

For more information about our products and services or to see a list of dealers, please visit us at: [www.hermanmiller.com/worldwide](http://www.hermanmiller.com/worldwide) or call +44 845 2267201

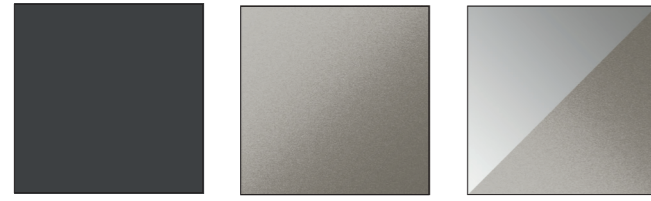
### PB1911

Herman Miller and  are registered trademarks of Herman Miller, Inc. Setu and Lyris are trademarks of Herman Miller, Inc.



## Setu Chair colour choices

### Base/linkage options



Graphite/Graphite  
G1

H-Alloy/H-Alloy  
L7

Semi-polished/H-Alloy  
5Y

### Frame and arm colour options



Graphite  
G1

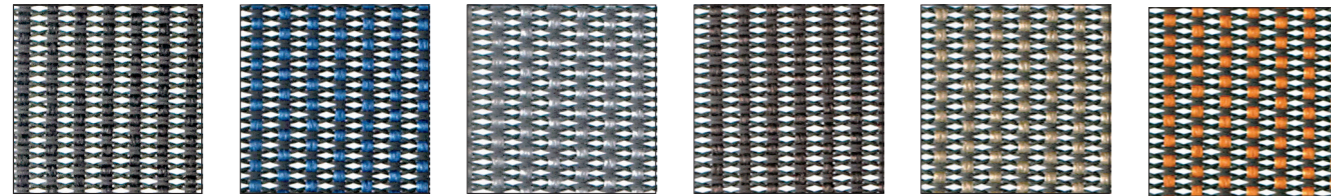
Slate Grey  
5G

Java  
5B

Chino  
JH

Studio White  
98

### Lyris 2 suspension colour options



Graphite  
4W31

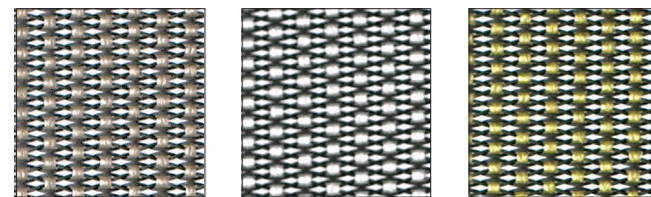
Berry Blue  
4W25

Slate Grey  
4W26

Java  
4W30

Rattan  
4W29

Mango  
4W22

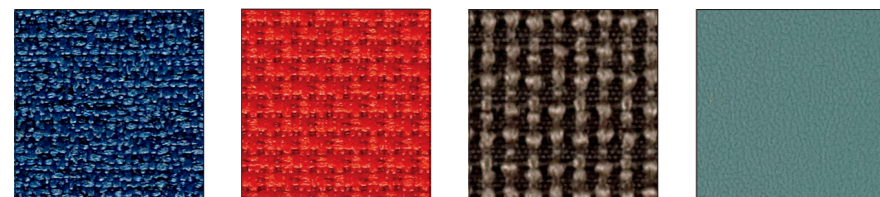


Chino  
4W28

Alpine  
4W21

Chartreuse  
4W23

### Fabric options \*



Twist  
8R

Crossing  
8T

Stitches  
8U

ColorGuard  
3P

## Setu Table colour choices

### Standard Top finish colour options - melamine



Charcoal Ash  
14

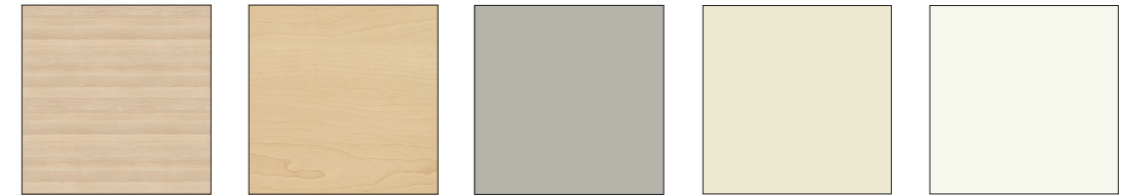
Natural Walnut  
RY

Smoked Cherry  
13

Havana Cherry  
0C

Natural Beech  
RZ

Napoli Oak  
0B



Light Ash  
12

Maple  
A8

Folkstone Grey  
8Q

Soft White  
LU

Chalk White  
X1

### Standard Top finish colour options - veneer



Walnut on Ash  
EV

Walnut  
OU

Walnut open grain  
OUG

Oak  
OK

Oak open grain  
OKG

Oak on Ash  
EU

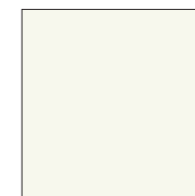


Maple  
Z5

Maple open grain  
Z5G

Clear on Ash  
ET

### Plywood Top colour options - laminate



Chalk White  
X1

### Plywood Top colour options - veneer



Walnut  
OU

### Base finish colour options



Graphite  
G1

H-Alloy  
L7

Semi-polished  
5Y

### Column finish colour options



Black  
BK

Graphite  
G1

White  
91

\*For the full range of fabric colours please refer to the fabric shade cards of Crossing, ColorGuard, Twist and Stitches.

Fabrics are not available on the Setu Stool in Europe

Colour samples are limited by the printing process and are indicative only.